

+ WELCOME TO THE PROJECT

About the Project

The South Dakota Department of Transportation (SDDOT), in cooperation with Meade County, is working to preserve the Interstate 90 (I-90) corridor between Exits 32 and 40. This section of I-90 serves as the primary connection between Sturgis and Rapid City, South Dakota.

The SDDOT has determined the pavement in the eastbound lanes of I-90 between Exits 32 and 40 will require replacement within the next eight years. The pavement condition, combined with deteriorating drainage structures, substandard designs, and interchange capacity limits, has led the SDDOT to develop a comprehensive project to address all issues within the corridor. The project will include a corridor study, interchange analysis and justification, environmental documentation, and design plans. The project will culminate with the construction of the selected alternatives studied. Although more than one project may be required to implement all the necessary improvements, construction of the first project is planned for 2022.

Study Area

The study area encompasses Interstate 90 from Exit 32 in Sturgis to Exit 40 at Tilford. The study area includes the following interchanges:

- Exit 32 at Junction Avenue
- Exit 34 at Pleasant Valley Drive/Blucksberg Drive/Old Stone Road
- Exit 37 at Pleasant Valley Road
- Exit 40 at 214th Street/Sturgis Road in Tilford

The study section also includes the Port of Entry facility located along I-90 eastbound between Exits 37 and 40.

Need for Study

This study will be the first step in the process to identify deficiencies and needed improvements to I-90 and its service interchanges between Exits 32 and 40. The study will initiate the FHWA Interchange Modification Justification process for addressing the Interstate Access Modification Policy Points.



I-90 Exit 32-40 Study and Design

+ SCHEDULE + STUDY PROCESS

Project Schedule

The I-90 Design and Study will follow a five phase plan between 2017 and 2022

- 1

Corridor Study: June 2017 - February 2018
- 2

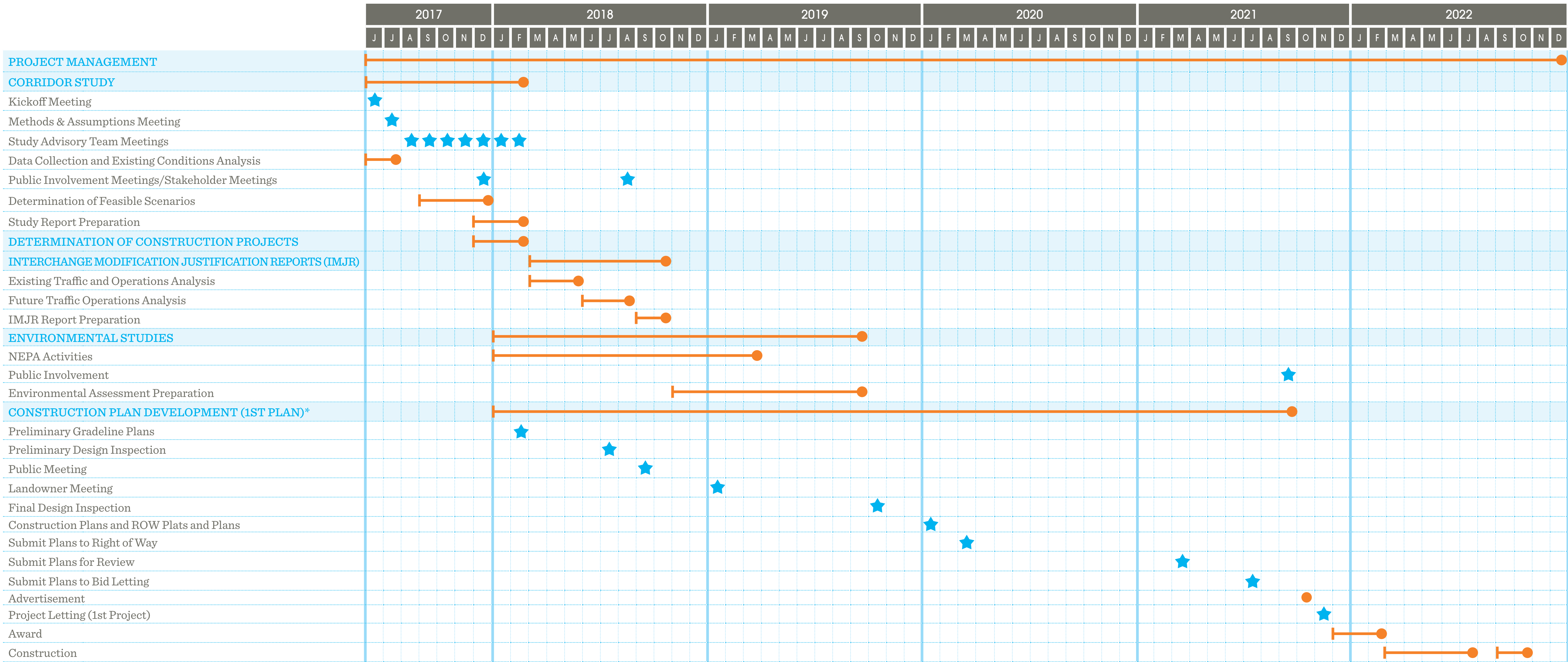
Determination of Construction Projects: December 2017 - February 2018
- 3

Interchange Modification Justification Reports: February - October 2018
- 4

Environmental Studies: January 2018 - September 2019
- 5

Construction Plan Development: January 2018 - September 2021

Project Schedule — I-90 Exit 32 to Exit 40 Corridor Study & Design



* It is anticipated that the 2nd project will follow the same schedule as the 1st project but all activities will occur 1 year later.

Legend

PRIMARY TASK

Sub-Task

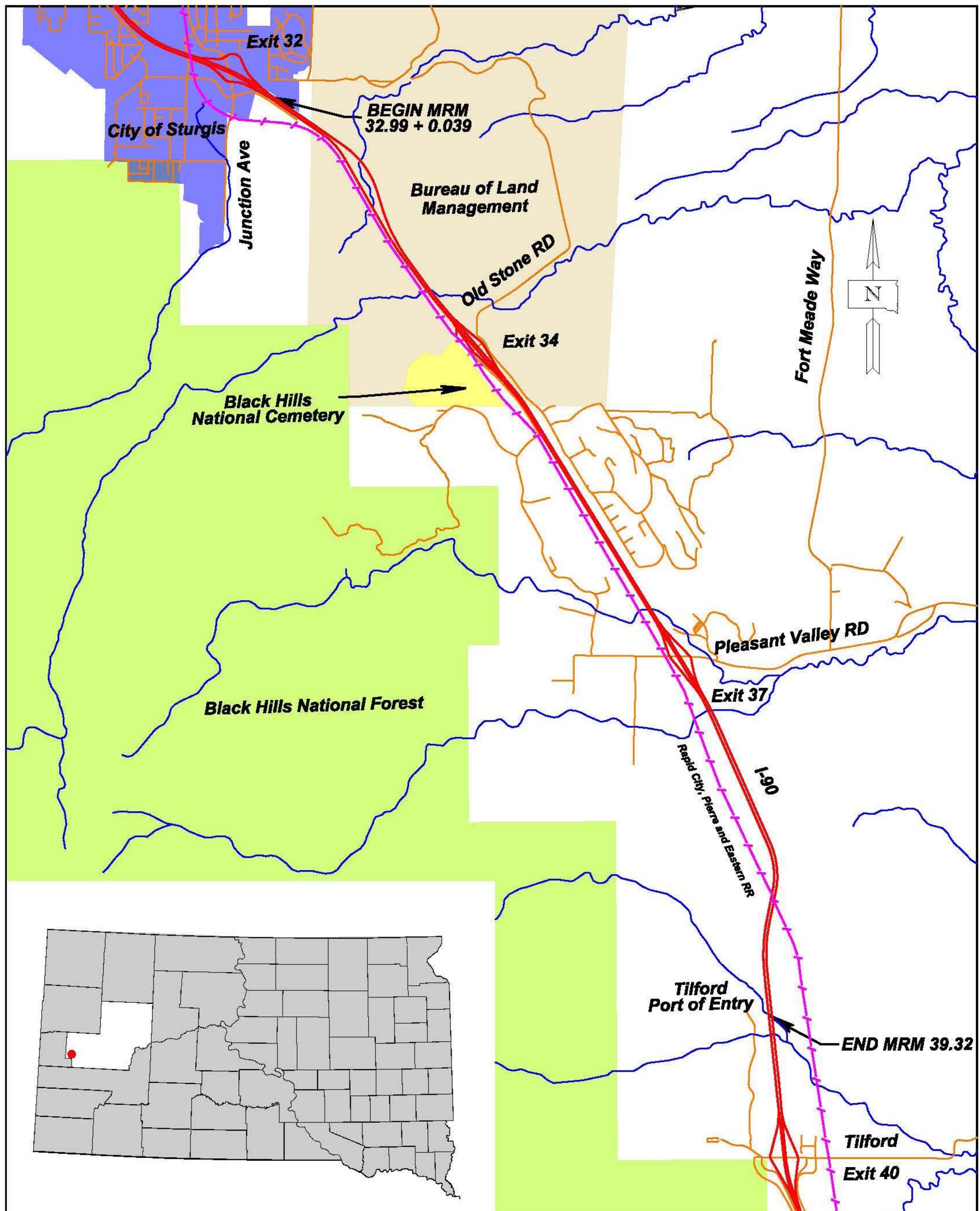
★ Meetings

Task Duration

+ STUDY AREA MAP

Project Location

The I-90 Study and Design is located along the interstate between Tilford and Sturgis

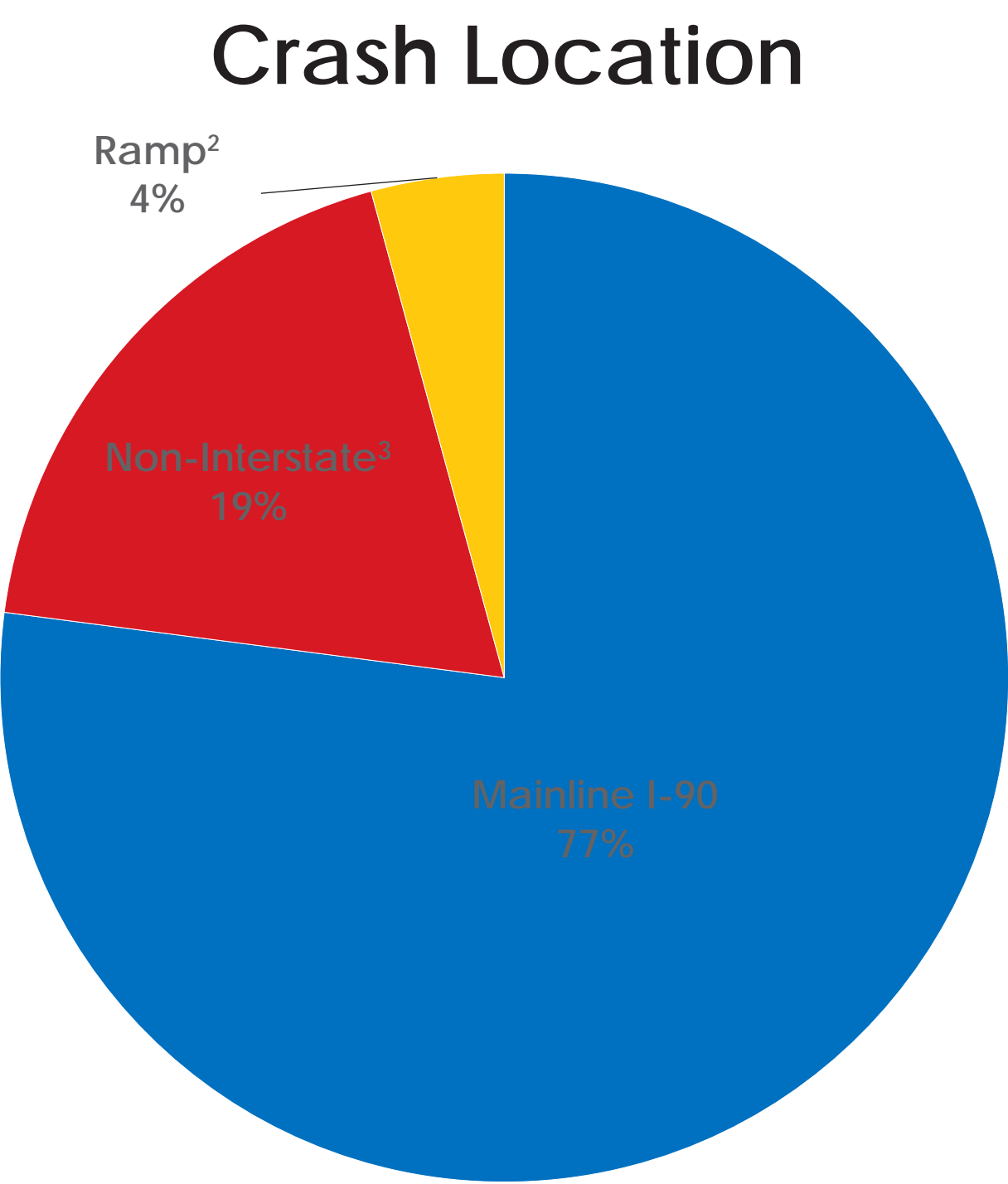
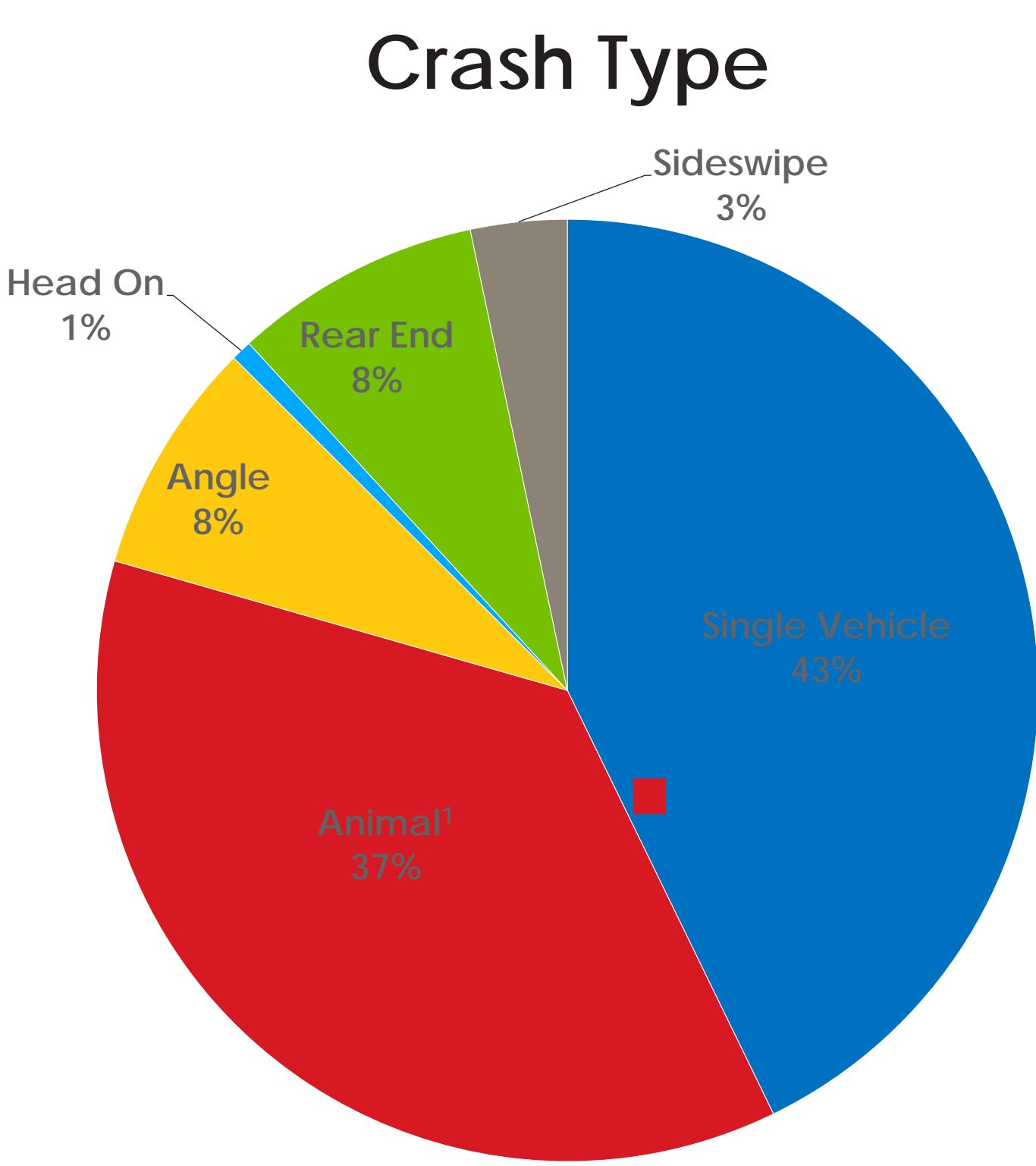
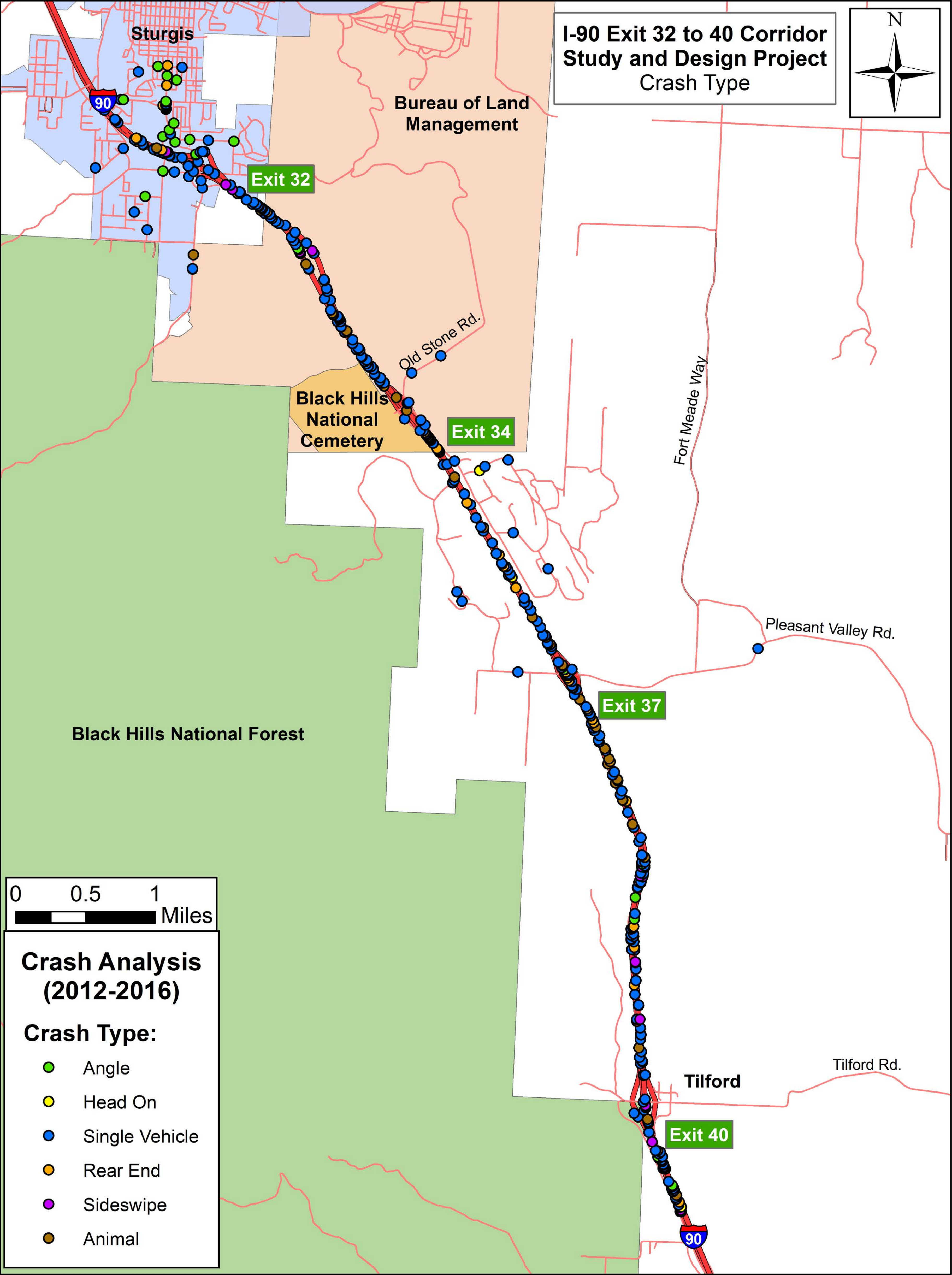


I-90 Exit 32-40 Study and Design

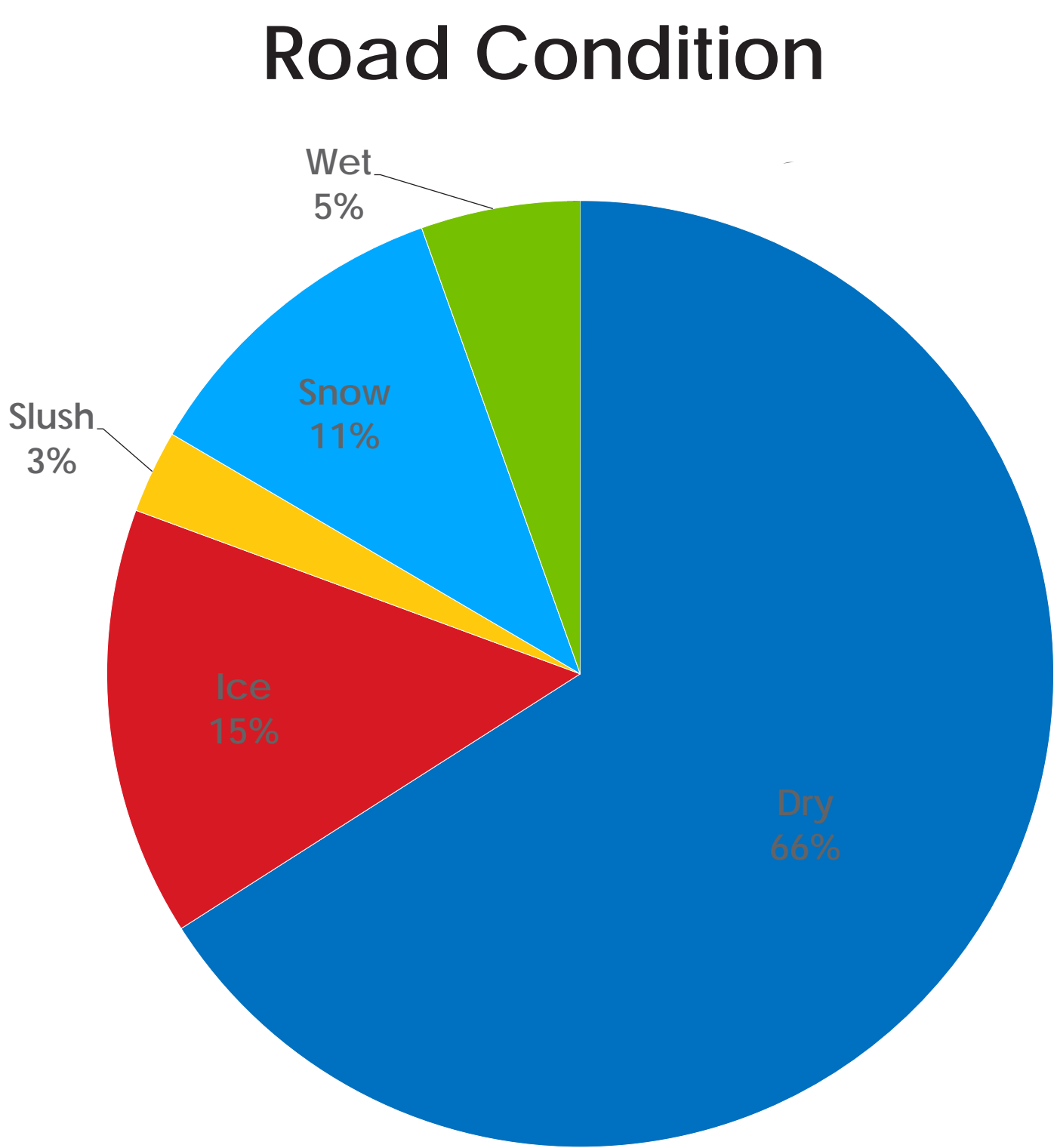
+ CRASH HISTORY

Segment	Route	Description	Beginning MRM ¹	Ending MRM ¹	Length (mi.)	Number of Crashes (2012-2016)	ADT ² (veh./day)	Actual Crash Rate	Statewide Average Crash Rate ³	Road Type
								(Annual Crashes/100 million VMT ⁴)		
1	I-90	West of Exit 32	31.50	32.41	0.910 ⁵	39	14,132	166	302	Urban Interstate
2	I-90	Between Exits 32 & 34	32.41	34.81	2.400	79	18,546	97	302/129	Urban/Rural ⁶ Interstate
3	I-90	Between Exits 34 & 37	34.81	37.01	2.200	83	18,090	114	129	Rural Interstate
4	I-90	Between Exits 37 & 40	37.01	40.20	3.190	95	17,570	93	129	Rural Interstate
5	I-90	East of Exit 40	40.20	41.00	0.800 ⁵	37	17,528	145	129	Rural Interstate

¹ Mileage Reference Marker
² 5-year annual average (2012 - 2016)
³ Source: South Dakota Accident Records
⁴ Vehicle Miles Traveled
⁵ Segment length for end sections are arbitrary, based on locations of reported crashes within the functional area of interchanges at Exits 32 and 40. Computed crash rates are for informational purposes only and are not indicative of crash rates for those entire sections.
⁶ Sturgis city limit lies at eastern terminus of Exit 32



2: Includes ramp terminal intersections with cross streets
3: All other streets/roads in the study area



+ NEXT STEPS

Stay Involved!

Thank you for taking the time to participate in our public meeting. We'd love to stay in touch and hear your feedback throughout the project.



Leave a Comment

Please let us know your thoughts by submitting a written comment on the forms provided or by participating in the guided activities at the meeting. We want to know what you see as the biggest issues and opportunities in the I-90 corridor and hear your ideas for improving it!

PUBLIC OPEN HOUSE
Brown High School | Lecture Room 111
12933 E. Highway 34, Sturgis, South Dakota 57785
Wednesday, December 20, 2017 • 4:30 P.M. TO 7:00 P.M.

The South Dakota Department of Transportation is seeking input on infrastructure improvements along Interstate 90 from exit 32 to 40. Please let us know your thoughts. Comments will be accepted by mail or online until January 5, 2018.

To learn more, visit our website at www.i90exit32to40.com.

Name: _____
Address: _____
Phone: _____
Email: _____

Comments: _____

I-90 Exit 32-40 Study and Design

**I-90 Exit 32 to 40
Corridor Study + Design Project
PUBLIC OPEN HOUSE
COMMENT FORM**

DOT

Mr. Dale Grove
Sturgis
6388 Farm Circle NW
Rochester, MN 55901

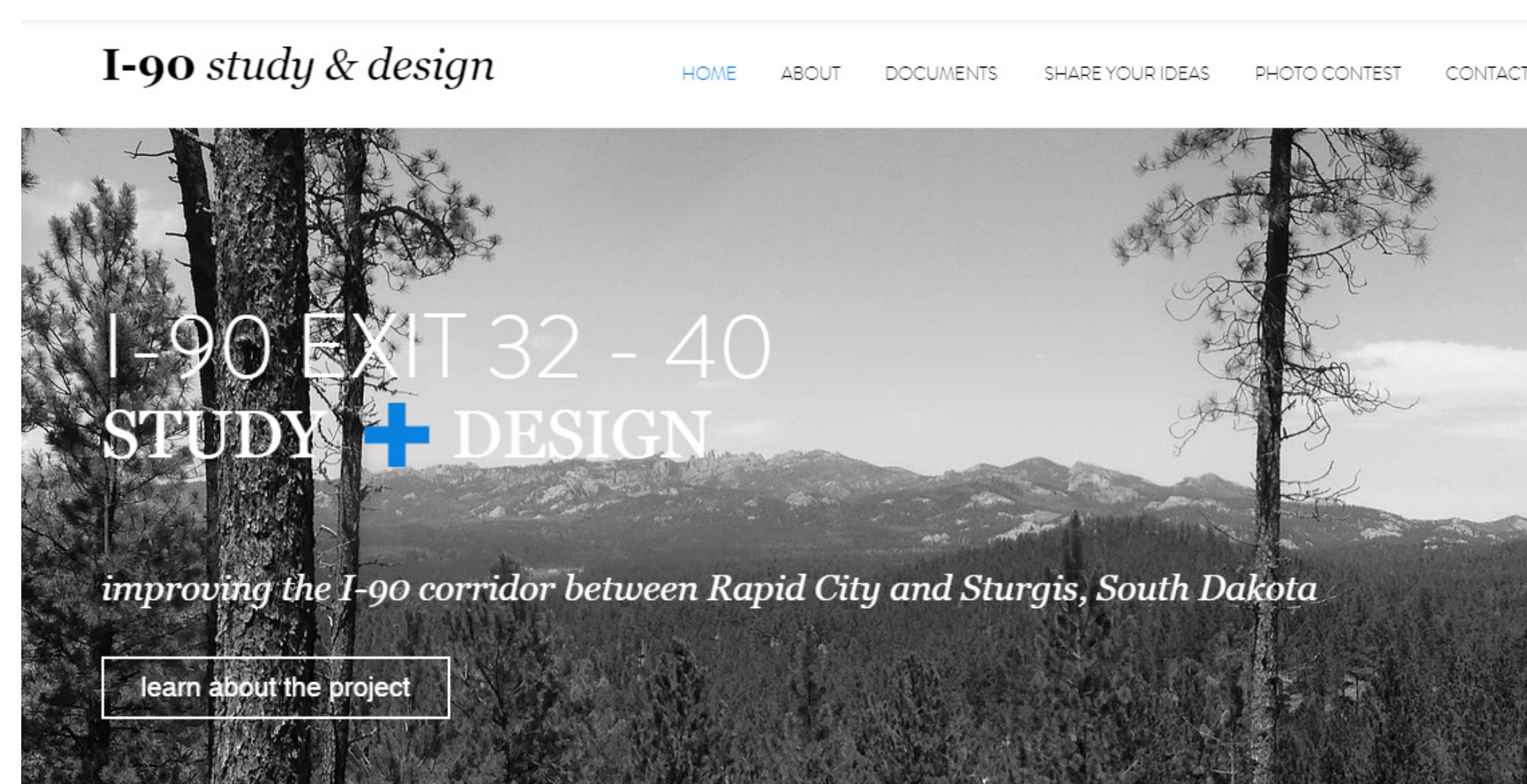
CONTACT INFORMATION:
Project Manager
Phone: (507) 251-8800
Email: dot@i90exit32to40.com



Visit the Project Website

Follow the project and stay up-to-date on meetings, next steps, and opportunities by participating through the project website. You can check it out here:

www.i90exit32to40.com



Enter the Photo Contest

You know your community better than anyone including the best vantage points, the places in need of the most repairs, unique sites, and parks along the way. Starting in January 2018, we're hosting a photo contest where you can submit your views of the I-90 corridor between Tilford and Sturgis. Your photo will be published on the website and may appear in final planning documents!



Attend a Future Public Meeting

Please plan to join us at future public and stakeholder meetings. We will be advertising these meetings online and at venues throughout the community. Can't make it? You can view past meeting materials on our project website.

Meeting	2017		2018				2021				
	Fall	Winter	Spring	Summer	Fall		Winter	Spring	Summer	Fall	
Public Meeting #1		★									
Stakeholder Meeting #1		★									
Public Meeting #2					★						
Stakeholder Meeting #2					★						
Public Meeting #3										★	
Landowner Meeting										★	

Notes:
★ Public Meeting
★ Consultant led meetings



Join the Listserv

Sign up to receive updates through the State's listserve:
<https://listserv.sd.gov/scripts/wa.exe?A0=I90EXIT34TO37>

I-90 Exit 32-40 Study and Design

